

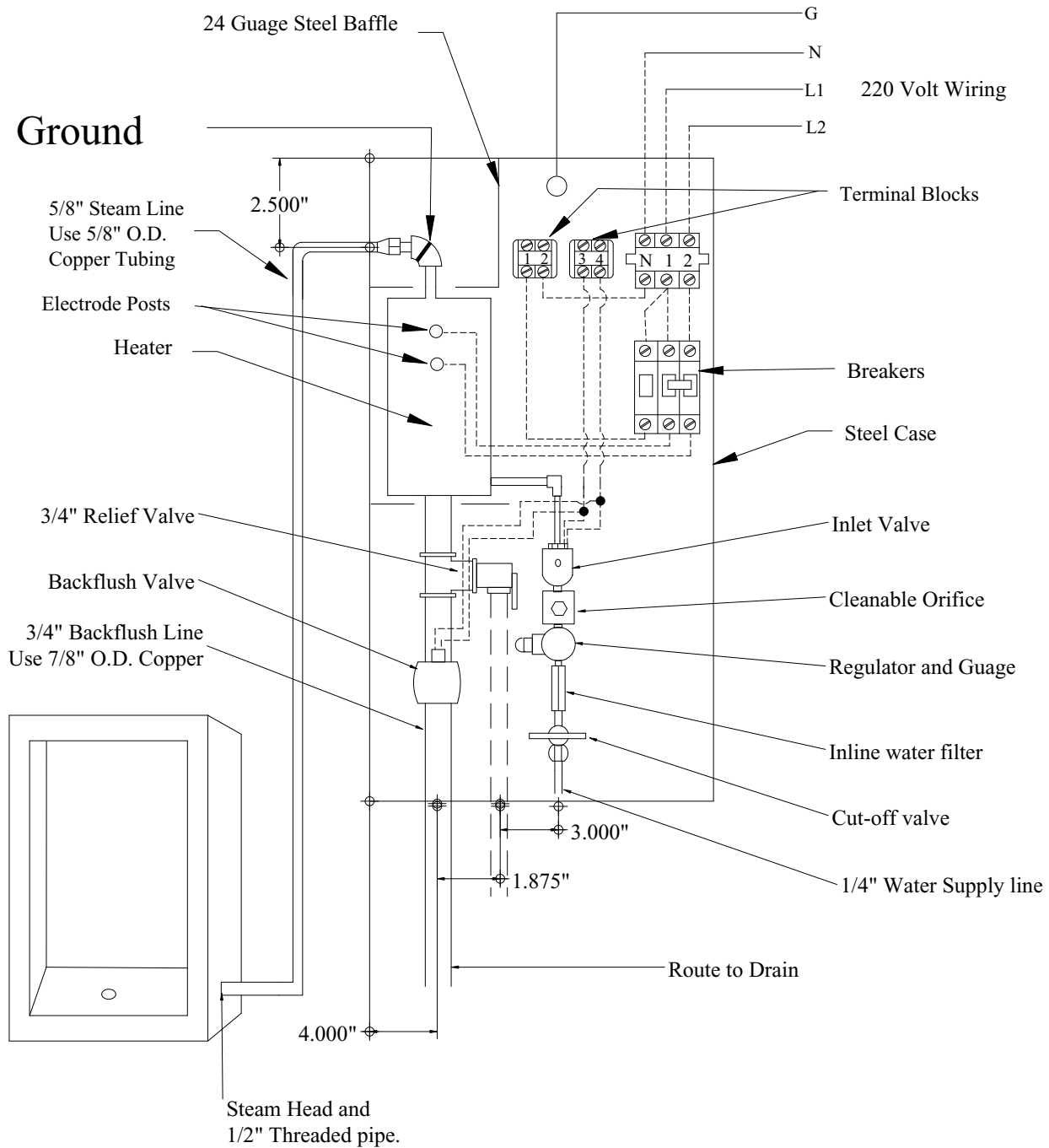
Warning - High Voltage

This cover should not be removed until electrical current is turned off.

Warning: Do not install valve or any obstruction in steam supply line

Typical installation and wiring diagram for

ROMA STEAM BATH



Mounting: Clearance to combustibile material.
 Top - 0" , Bottom - 0" , Back - 0"
 Do not enclose front of unit
 For wiring use Class 1 wiring

Unit Dimensions
 29" x 14" x 5"

Roma Steambath
 281/578-9945