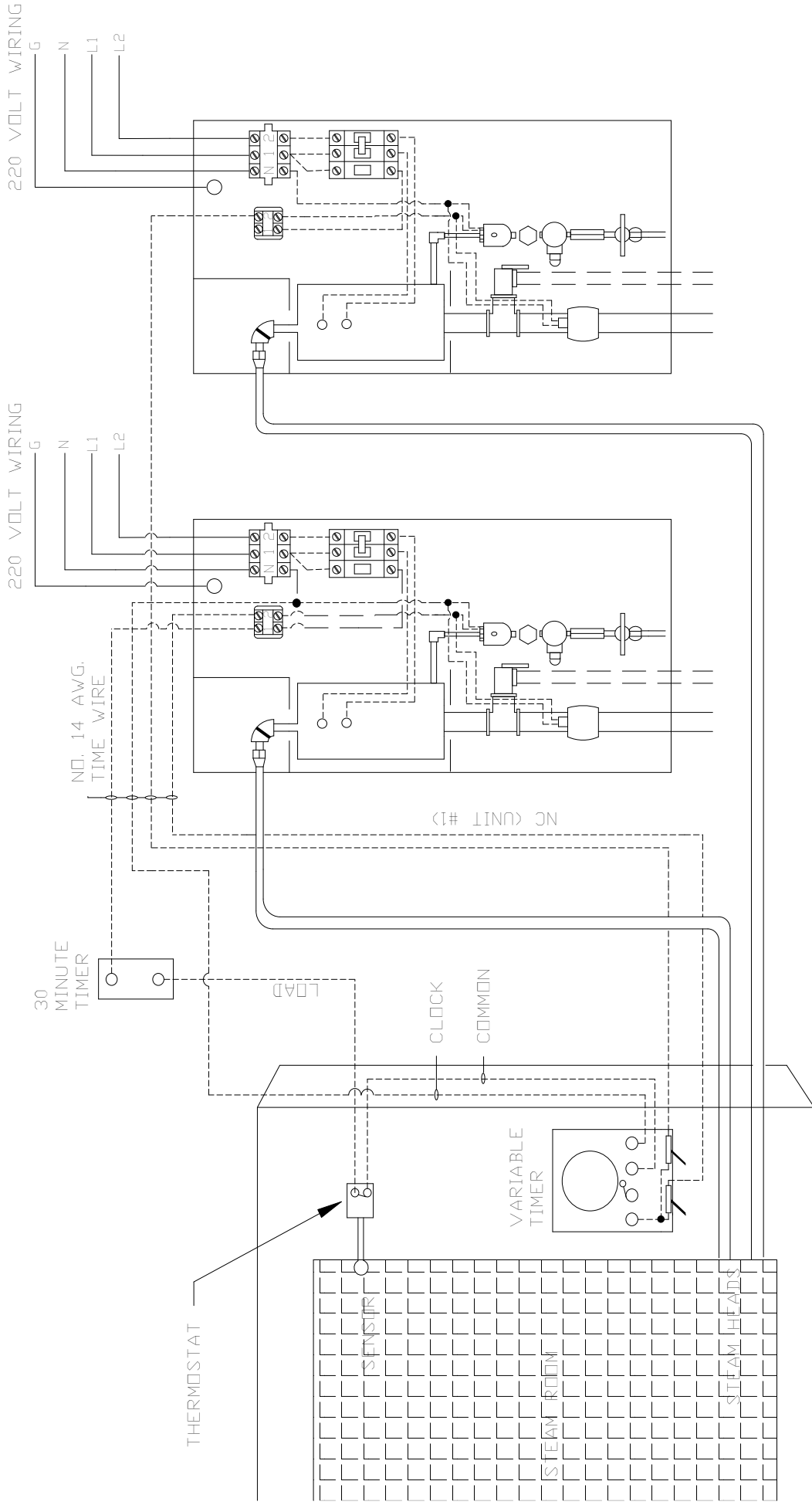


**WARNING - HIGH VOLTAGE  
TYPICAL INSTALLATION AND WIRING FOR:  
COMMERCIAL WIRING SINGLE UNIT**

Covers should not be removed until electrical current is turned off.

Typical installation and wiring for:

**COMMERCIAL MULTI-UNIT WIRING DIAGRAM**



Mounting: Clearance to combustible material. Top - 0", Bottom - 0", Back - 0". Do not enclose front of unit. Use class 1 wiring.